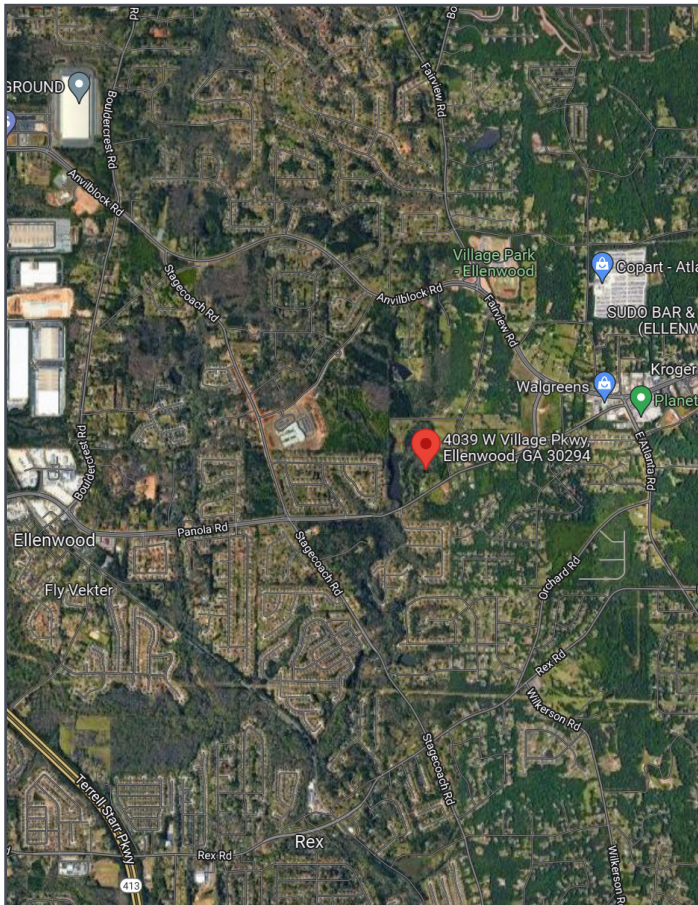




2 - 1,100 SF SUITES AVAILABLE



PROPERTY OVERVIEW

- NEW Fairview Terrace development in Ellenwood
- 2 - 1,100 SF retail spaces available for Lease
- High traffic with 154 multifamily units on-site
- 17 parking spaces dedicated for retail
- Great opportunity for long-term tenant
- Zoned MU
- Scheduled completion Q4 2022

CONTACT

Tekee Parker
tekee@dtspade.com
c. 404.964.7121
o. 404.939.9528

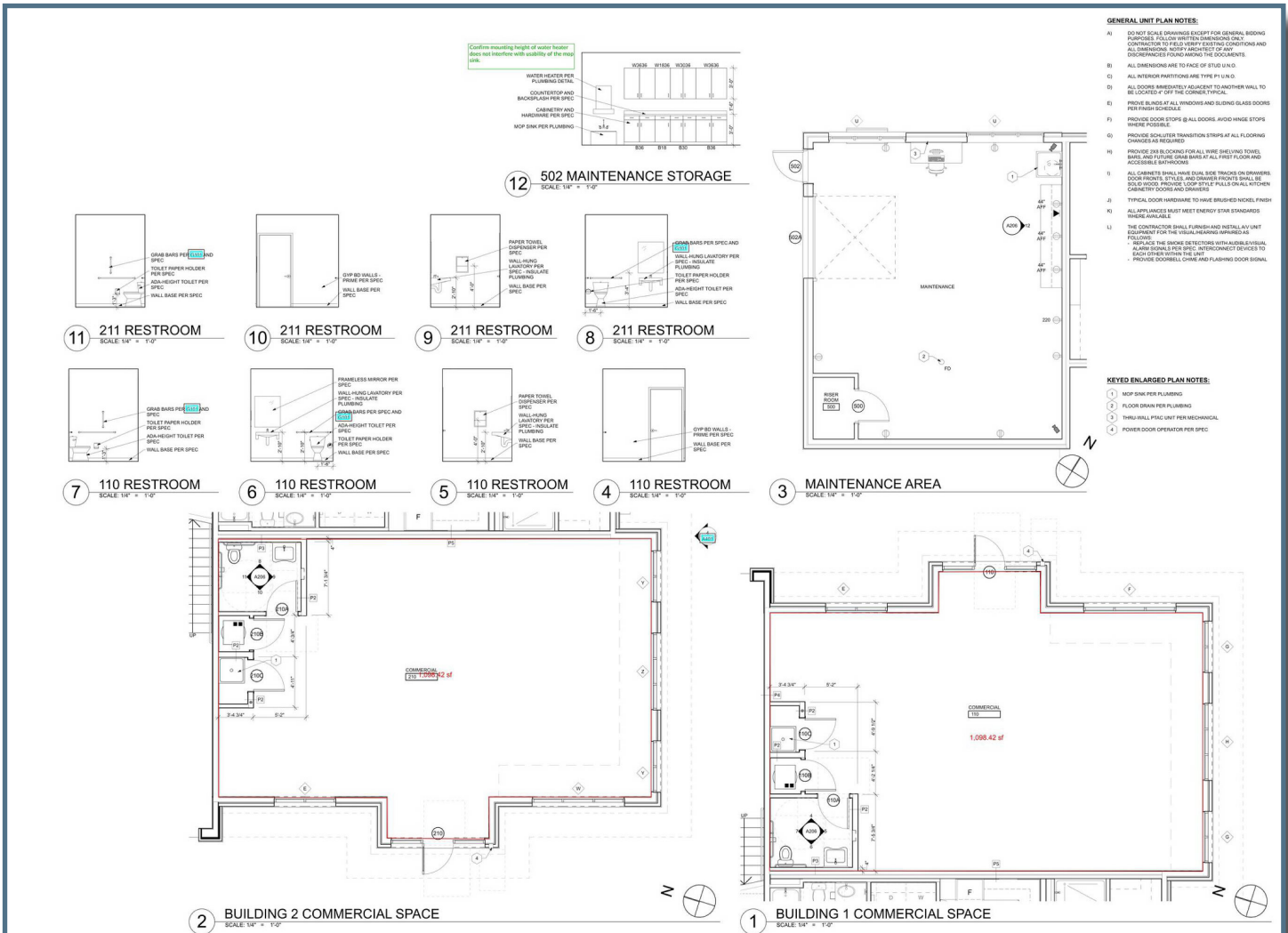
People Count. Location Matters. Find Your Place.

900 CIRCLE 75 PKWY SUITE 1350 ATLANTA, GA 30339 404.939.9500

DTSPADE.COM

No warranty or representation, express or implied, is made as to the accuracy of the information contained herein, and same is subject to errors, omissions, change of price, rental or other conditions, withdrawal without notice, and to any special listing conditions imposed by our principals.

FLOORPLANS



ADDITIONAL PHOTOS

